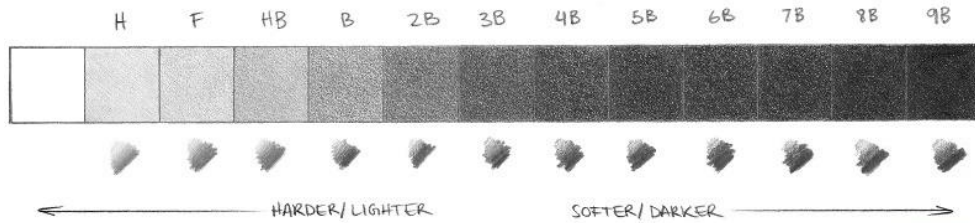


Year 6 Art: WW1 Soldier

Shading to add depth and realism

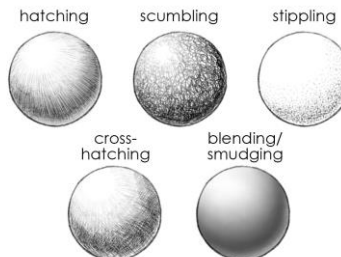
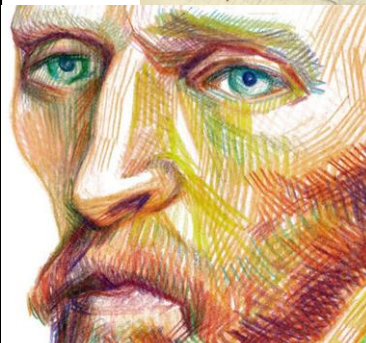
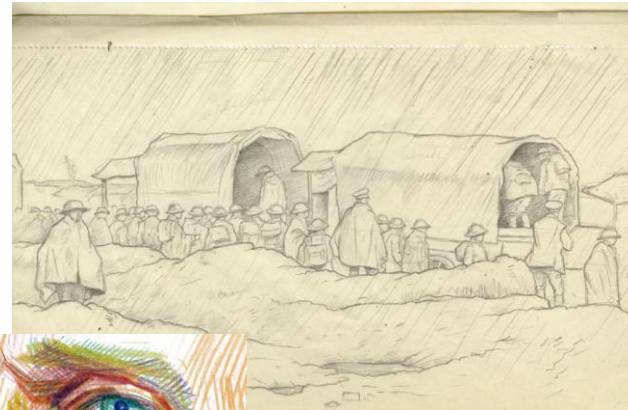


Subject specific vocabulary

composition	The arrangement of elements in a work of art.
contour	The outline of a shape or object.
cross-hatching	A type of shading that involves drawing crisscrossed lines which are used to build up shadow and tone.
drawing mediums	Materials to draw with such as ink, graphite, charcoal, pastel.
hatching	A type of shading that involves drawing lots of parallel lines close to each other.
pressure	The amount of force placed on an object e.g. how hard a pencil is pushed against the paper. Use a light pressure to sketch.
sketch	A rough drawing representing the chief features of an object or scene.
texture	The feel or appearance of a surface or material.
tone	The lightness or darkness of something.

Morris Meredith Williams served in France WW1. He took with him a supply of pocket-sized sketchbooks and made hundreds of quick, unofficial, pencil drawings of life in the trenches.

H = hardness
B = blackness
The best pencils for drawing and sketching are a HB, 2B, 6B and 9B.



Key Skills

- I can use a variety of techniques to add effects, e.g. shadows, reflection, hatching and cross-hatching.
- I can use a variety of drawing tools and select the most appropriate.
- I can use key vocabulary to demonstrate knowledge and understanding in drawing, e.g. light, dark, tone, shadow, line, texture, form, shape, outline.

Sticky knowledge

- Shading is an effective way to add elements of depth and realism to any drawing.
- Shading techniques include: hatching, cross-hatching, and contour lines.